



Welcome

Back to School

6th Grade



Safety Patrol



Once every six weeks

Arrive no earlier than 7:30am

Students will go to HR and pack for morning classes.

Siblings must return to the carline.

If you arrive later than 7:40am, simply drop off in the carline.

Communication



If your child will be out, please include all of their teachers and Mrs. Drapalski.

Please include June Schuyler on all early dismissal emails.

jschuyler@stjohnsp.org

Weebly

<https://stjohntheevangelist.weebly.com/>



Password: Eagles1959

- Important school information/dates
- Safety groups and schedule
- Daily CW/HW links
- Assessment Calendars



HR Parents/PTP Rep



HR Parents

- Virtus certified parents.
- Help organize class parties

PTP Rep

- Attend monthly PTP meeting
- Communicate with parents about PTP events

- Email will be sent Thursday for interest in these positions
- Chosen randomly

Fun Events

- Polar Bear Plunge
- Spalding Christmas Performance Preview
- Bible Museum
- Toby's Dinner Theatre
- Spring Retreat

*Give Thanks
with a
Grateful*



OneNote Notebook

- Each subject has a NB.
- Daily CW/HW
- Assignments
- Class Notes

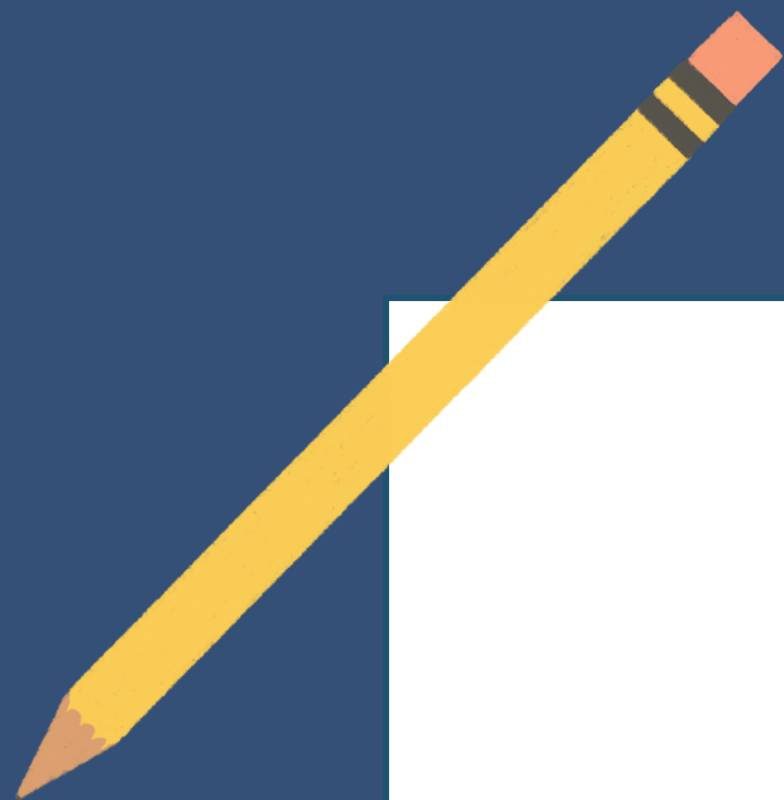




Contact Me

Feel free to contact me
with any questions or
concerns :

mwebb@stjohnsp.org



Let's have a
great year!

*Give Thanks
with a
Grateful*

